



JRC EUROMOD – Installation and configuration manual

Version 1.4 – February 2025

Table of Contents

| | |
|---|---|
| 1 - Prerequisites | 3 |
| 2 - Introduction | 3 |
| 3 - Model configuration | 3 |
| 4 - Software installation and configuration | 4 |
| 5 - Data configuration | 7 |
| 6 - Contact | 7 |

1 - Prerequisites

- Windows 7 or later.
- Internet Explorer 9 or later (required to use the Statistics Presenter plugin).
- Disk Space:
 - 190 MB required to install the software.
 - 1.65 GB required to unzip the model.
 - Additional space for the input microdata.
- Internet connection (in case Microsoft .NET Framework is not installed yet).
- Administrator permissions.

2 - Introduction

There are three key components to EUROMOD: the software, the model (coded policy rules) and the input microdata.

- **Model:** Coded policy rules.
- **Software:** Windows application that allows using the model.
- **Input microdata:** Survey-based microdata. The model contains training datasets that can be used with each country model.

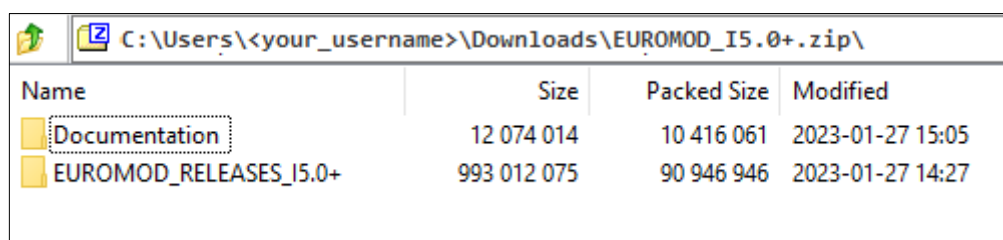
The requirements and the way to get access to each component are described in the EUROMOD website: <https://euromod-web.jrc.ec.europa.eu/download-euromod/>

3 - Model configuration

The EUROMOD coded policy rules are distributed under the Creative Commons Attribution 4.0 International (CC BY 4.0) licence (Open Source) since EUROMOD I3.0+.

In order to configure the EUROMOD model, please follow the steps below:

- Download the zipped model from the EUROMOD website, under the model section: <https://euromod-web.jrc.ec.europa.eu/download-euromod/>
- The model contains two folders:
 - Documentation: documents on how to use EUROMOD, its Add-ons and plugins.
 - Folder that contains the EUROMOD files (for example, for version I5.0+ the name of this folder is EUROMOD_RELEASES_I5.0+).



| Name | Size | Packed Size | Modified |
|------------------------|-------------|-------------|------------------|
| Documentation | 12 074 014 | 10 416 061 | 2023-01-27 15:05 |
| EUROMOD_RELEASES_I5.0+ | 993 012 075 | 90 946 946 | 2023-01-27 14:27 |

- Unzip and copy the folder which contains the EUROMOD files (EUROMOD_RELEASES_I5.0+) to your working folder. It can be any folder in your computer.

<Working folder>\<EUROMOD_files_folder>\

For example:

C:\Users\

Please note that you can rename the EUROMOD files folder if needed.

For example:

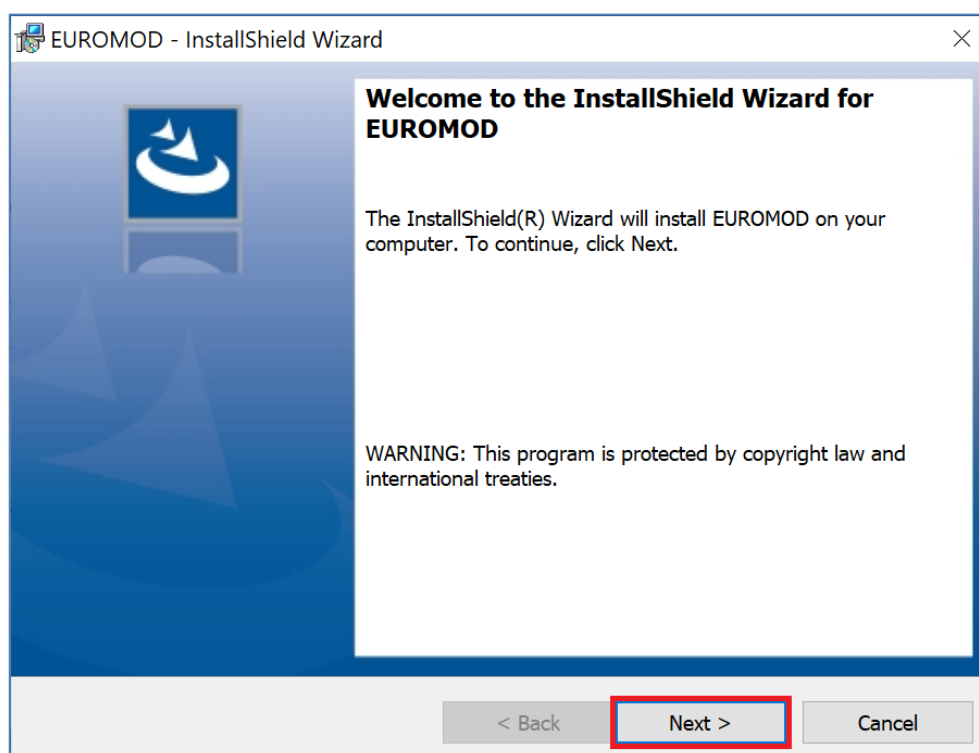
C:\Users\

4 - Software installation and configuration

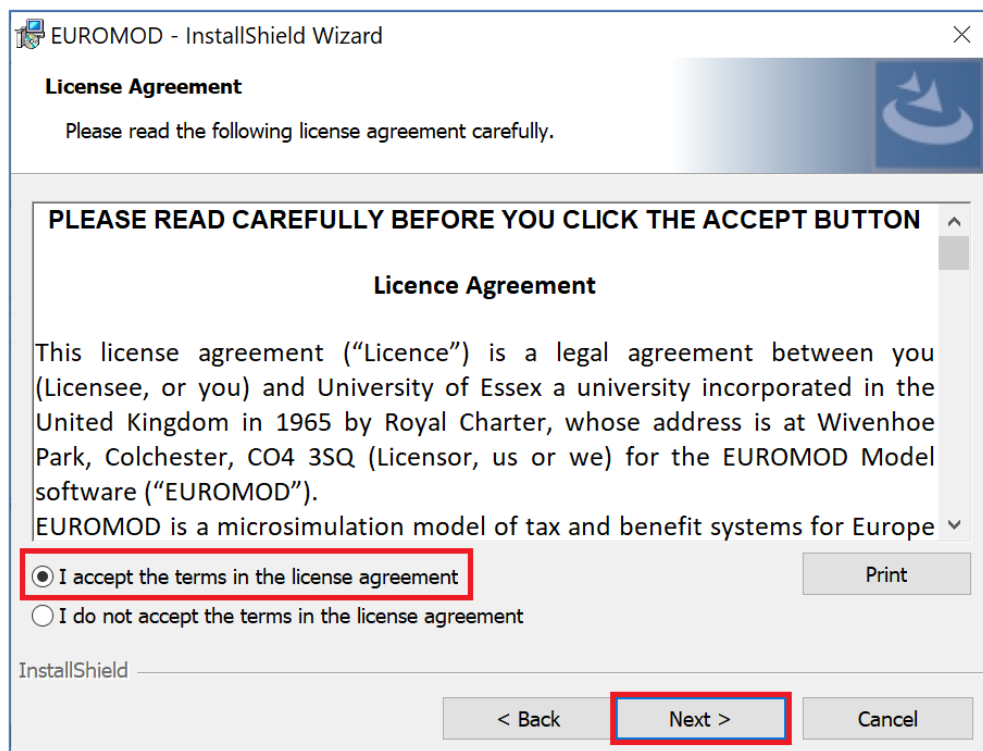
The EUROMOD software is a Windows application that allows users to open, modify and run the model using a user-friendly interface. The software is distributed under an End-user licence agreement.

In order to install the software, please follow the steps below:

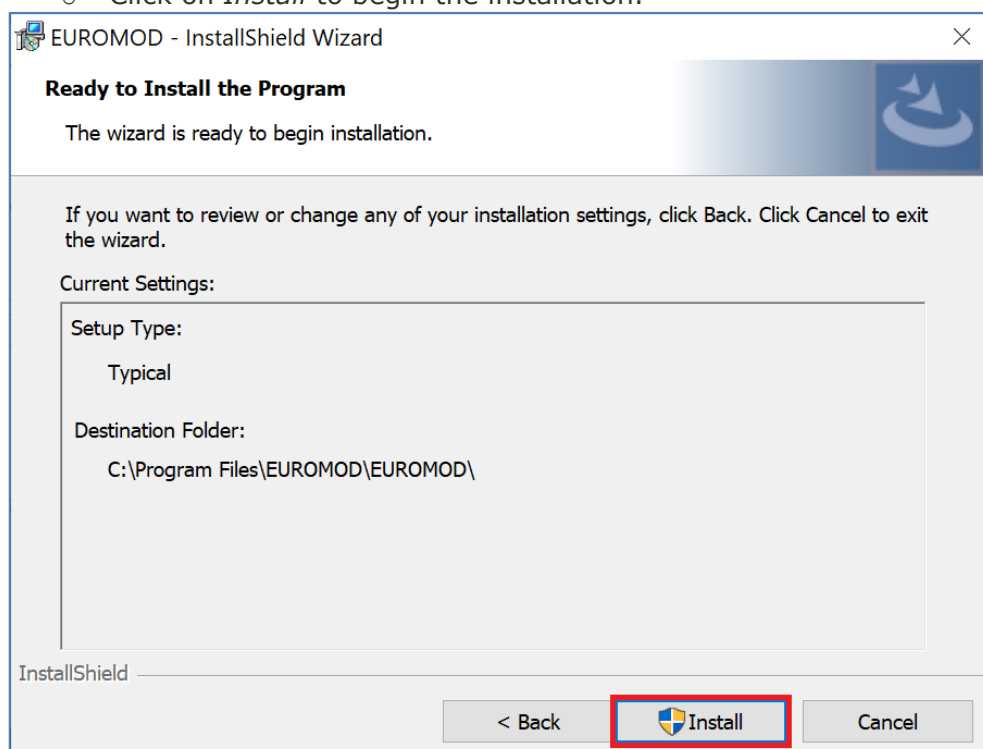
- Download the software from the EUROMOD website, under the software section: <https://euromod-web.jrc.ec.europa.eu/download-euromod/>
- Double click on the installer to launch the installation process.
- Follow the steps in the installer to install EUROMOD:
 - Click on *Next* on the welcome screen:



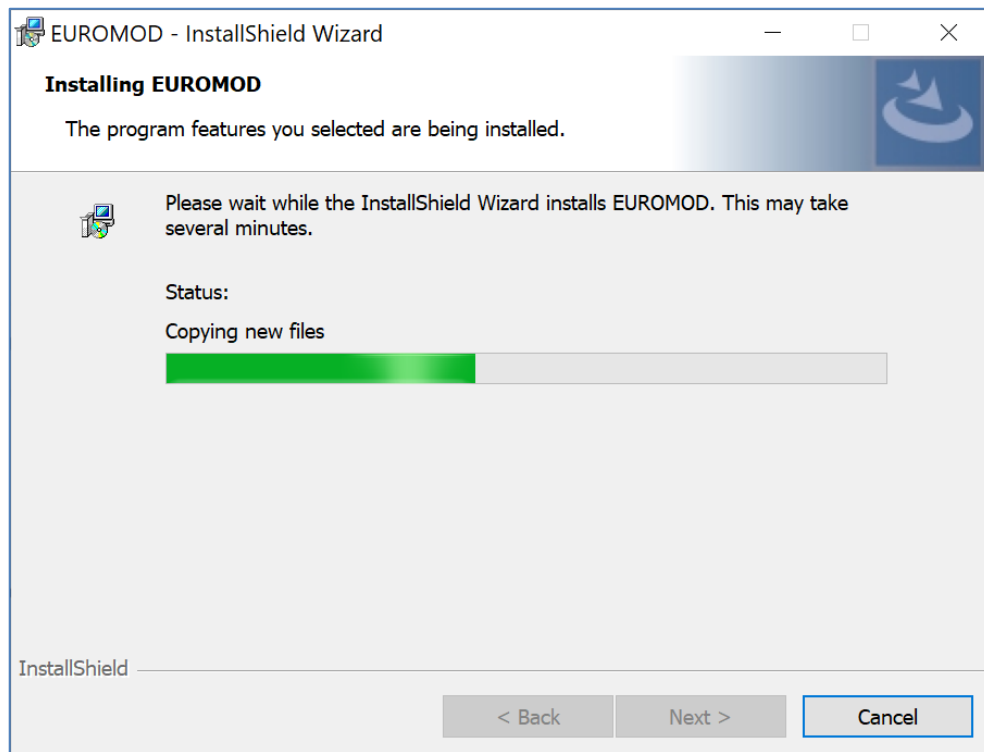
- Then, click on "I accept the terms in the license agreement" and click on *Next*.



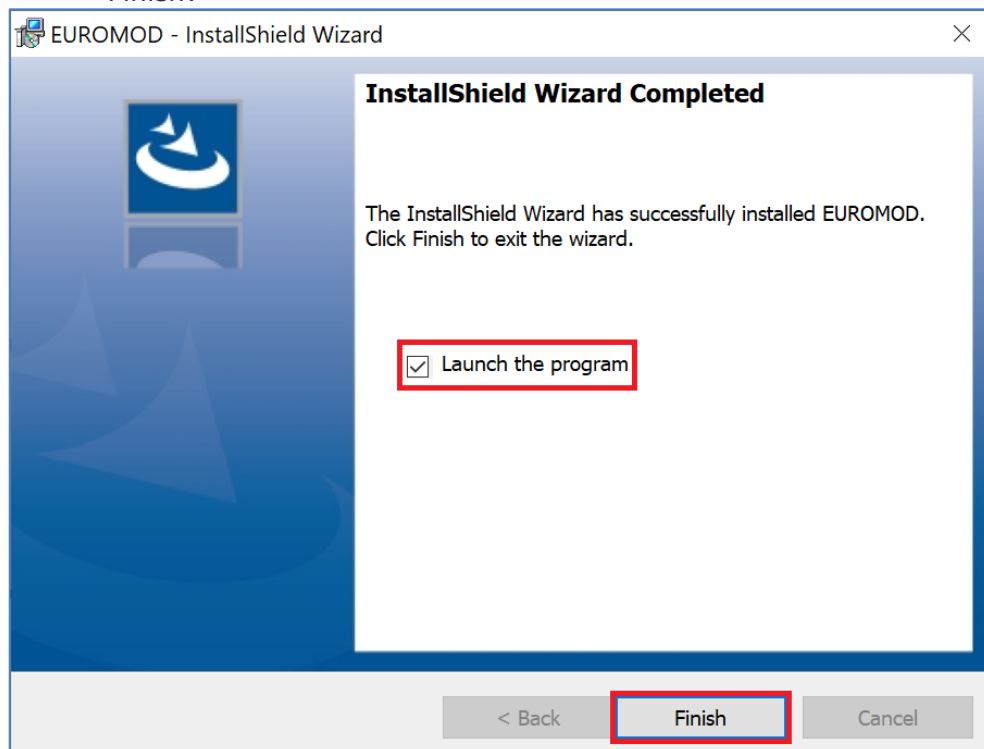
- Click on *Install* to begin the installation.



- A Windows pop-up may ask you if you would like this application to perform changes in your device. Click on Yes.
- Wait until the installation finishes.



- Make sure the option "Launch the program" is selected and click on *Finish*.

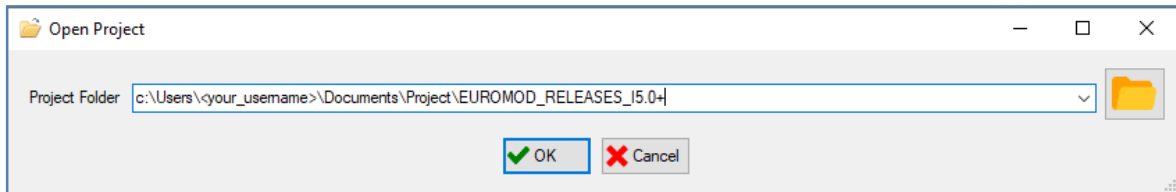


- The first time EUROMOD is launched, it will ask you to indicate the path to the EUROMOD files folder (the folder containing the files you have previously downloaded in step 3 - "Model configuration"). Insert it and click on OK. EUROMOD will save this path so that you don't need to indicate it again.

<Working folder>\<EUROMOD_files_folder>\

For example:

C:\Users\<your_username>\Documents\Project1\EUROMOD_RELEASES_I5.0+



- Next time you start EUROMOD, you can use the shortcut created by the installer in your Desktop or run it from the Windows Home Menu.

5 - Data configuration

EUROMOD can be run with training data, with data based on the EU-SILC (for the EU member states) and based on the Family Resources Survey (FRS, for UK) or with synthetic data generated with the Hypothetical Household tool.

The training data is already included in the model. If you intend to use EUROMOD with training data, no additional actions are needed.

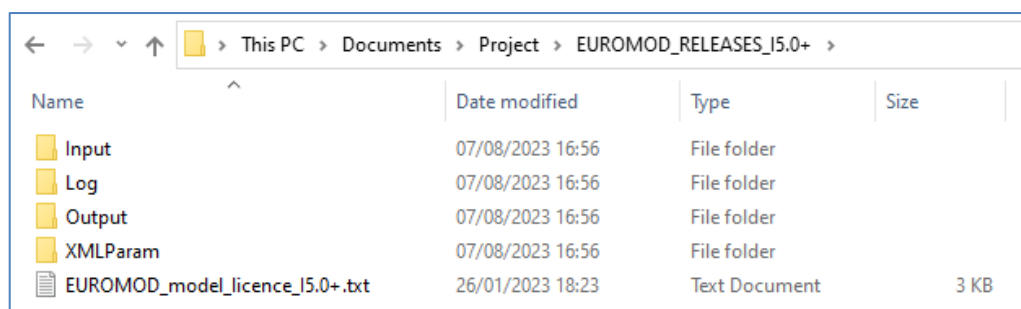
In order to use data based on EU-SILC or the FRS, please follow the steps below:

- Request access to the data. The requirements and the way to get access to them are described in the EUROMOD website, under the data section: <https://euromod-web.jrc.ec.europa.eu/download-euromod/>
- Once you are granted with access to the data, download it and unzip it.
- Copy the datasets to the following folder:

<EUROMOD_files_folder>\Input

For example:

C:\Users\<your_username>\Documents\Project\EUROMODFiles_I5.0+\Input



6 - Contact

If you find any problems when installing or configuring EUROMOD, please visit <https://euromod-web.jrc.ec.europa.eu/support>.